



## SILDENAPLEX 100



[HOME](#) | [SPECIALS](#) | [NEW PRODUCTS](#) | [ALL PRODUCTS](#) | [REVIEWS](#) | [CONTACT US](#) | [FAQ](#)

### SILDENAPLEX 100

SILDENAPLEX 100 (Sildenafil citrate) Axiolabs BUY SILDENAPLEX 100

#### Categories

- [Injectable Steroids](#)
- [Oral Steroids](#)
- [Ancillaries](#)
- [Sexual Health](#)
- [Syringes & Needles](#)

#### News

2008-06-17

##### [Anabolic Steroid Dianabol Turns 50](#)

The performance-enhancing drug Dianabol, which became the first widely used anabolic steroid and has built muscle for athletes and bodybuilders and become the subject of criminal prosecutions, was developed in 1958. There's a good piece in the New York Daily News looking at half a century of the steroid's use:

2008-06-27

##### [Get Off The Couch This Summer Join The Fitness Revolution For Kids](#)

Get Off The Couch This Summer Join The Fitness Revolution For Kids Theresa Byrne has helped thousands blossom through health and fitness at her Denver martial arts studio and as the fitness coach on the reality show Fitting In, on the ABC Family Channel. Now she's bringing her motivational fitness program to a kid near you. Today Byrne releases a workout DVD

[Buy Now](#)



**Substance:** Sildenafil Citrate  
**Manufactured by:** Axiolabs  
**Packaging:** 4 tabs, each tab 100mg

**Sildenafil 100 (VIAGRA)** is an oral medication for erectile dysfunction (ED). It helps most men with ED improve their erections. That means they are able to achieve harder erections.

Getting an erection is only half the story. Maintaining an erection is just as important as getting one. **VIAGRA** can help with both. This can lead to a more satisfying sexual experience with your partner.

#### Who can take **VIAGRA**

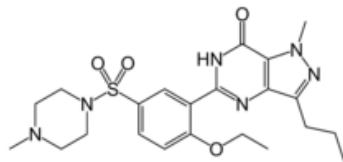
**VIAGRA** has an established safety profile of over 9 years. It has been shown to work safely and effectively in men with ED. This includes:

- [Men of all ages](#)
- [Men who have difficulty all the time or just some of the time](#)
- [Men with other health issues such as high blood pressure, diabetes, and depression](#)

Find out if **VIAGRA** is right for you. Speak to your doctor. He can tell you if you have ED. And can recommend an effective treatment.

#### DOSAGE AND ADMINISTRATION

For most patients, the recommended dose is 50 mg taken, as needed, approximately 1 hour before sexual activity. However, **VIAGRA** may be taken anywhere from 4 hours to 0.5 hour before sexual activity. Based on effectiveness and toleration, the dose may be increased to a maximum recommended dose of 100 mg or decreased to 25 mg. The maximum recommended dosing frequency is once per day.



The following factors are associated with increased plasma levels of sildenafil: age >65 (40% increase in AUC), hepatic impairment (e.g., cirrhosis, 80%), severe renal impairment (creatinine clearance <30 mL/min, 100%), and concomitant use of potent cytochrome P450 3A4 inhibitors [ketoconazole, itraconazole, erythromycin (182%), saquinavir (210%)]. Since higher plasma levels may increase both the efficacy and incidence of adverse events, a starting dose of 25 mg should be considered in these patients.

Ritonavir greatly increased the systemic level of sildenafil in a study of healthy, non-HIV infected volunteers (11-fold increase in AUC, see Drug Interactions.) Based on these pharmacokinetic data, it is recommended not to exceed a maximum single dose of 25 mg of

**VIAGRA** in a 48 hour period.

**VIAGRA** was shown to potentiate the hypotensive effects of nitrates and its administration in patients who use nitric oxide donors or nitrates in any form is therefore contraindicated. When **VIAGRA** is co-administered with an alpha-blocker, patients should be stable on alfablocker

based on her "Fitness Revolution for Kids" program, a new approach built on the belief that kids can find success and even fun getting fit through positive motivation and by connecting mind, body and spirit. Fitness Revolution for Kids is a playful, high-energy workout for children ages 5 and up. It is now available at <http://www.revolutionforkids.com> for \$19.99. "The Revolution is designed to give today's amazing children the tools they need to create their own generation of health," Byrne said. "We empower kids and their families by accepting the good things about them. When kids are feeling healthy and strong, their positive contributions to the world are limitless."

therapy prior to initiating **VIAGRA** treatment and **VIAGRA** should be initiated at the lowest dose (see Drug Interactions).

#### **Side effects**

Amongst sildenafil's rare but serious adverse effects are: priapism, severe hypotension, myocardial infarction, ventricular arrhythmias, stroke and increased intraocular pressure.

Common side effects include sneezing, headache, flushing, dyspepsia, prolonged erections, palpitations and photophobia. Visual changes including blurring of vision and a curious bluish tinge have also been reported.

Care should be exercised by patients who are also taking Protease inhibitors for the treatment of HIV. Protease inhibitors inhibit the metabolism of sildenafil, effectively multiplying the plasma levels of sildenafil, increasing the incidence and severity of side-effects. It is recommended that patients using protease inhibitors limit their use of sildenafil to no more than one 25-mg dose every 48 hours.

Some sildenafil users have complained of blurriness and loss of peripheral vision. In May of 2005, the U.S. Food and Drug Administration found that sildenafil could lead to vision impairment and a number of studies have linked sildenafil use with nonarteritic anterior ischemic optic neuropathy. When used with an alpha blocker, take them at least four hours apart to avoid hypotension.

[Home](#) | [Specials](#) | [New Products](#) | [All Products ...](#) | [Reviews](#) | [Contact Us](#) | [FAQ](#) | [Map](#)

**BUY SILDENAPLEX 100** Copyright © 2005-2007. [Privacy Notice](#)