



TALDENAPLEX 20



[HOME](#) | [SPECIALS](#) | [NEW PRODUCTS](#) | [ALL PRODUCTS](#) | [REVIEWS](#) | [CONTACT US](#) | [FAQ](#)

TALDENAPLEX 20

TALDENAPLEX 20 (Tadalafil) Axiolabs BUY TALDENAPLEX 20

Categories

- [Injectable Steroids](#)
- [Oral Steroids](#)
- [Ancillaries](#)
- [Sexual Health](#)
- [Syringes & Needles](#)

News

2008-06-27

[The sport of bodybuilding](#)

The sport of bodybuilding The popular, growing sport of bodybuilding in the region is leading to bigger championships for local enthusiasts. Dana Ali, 31, who recently returned to Kurdistan from Britain, started lifting weights six year ago when he was abroad. "Oh, I became many pounds overweight," he said, taking a break after finishing the first set. "I see so many [overweight people] here, and I don't want to be like them. "I feel better and forget about all my problems when I come in and exercise," said Ali, having arrived straight from work wearing a black T-shirt and leather gloves. He works out five times a week and has shed most of his body fat; his chest and biceps are as thick as they were when he was living in Britain.

2008-06-27

[The sport of bodybuilding](#)

The sport of bodybuilding The

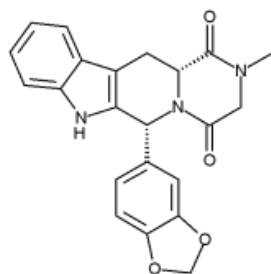
Substance: Tadalafil
Manufactured by: Axiolabs
Packaging: 1 x 4 tabs (20mg)

Taldenaplex 20 (Tadalafil) is a drug used to treat male erectile dysfunction (impotence). It was developed by the biotechnology firm ICOS and marketed worldwide by Eli Lilly and Company under the brand name **Cialis**.

In the United States, tadalafil has Food and Drug Administration approval and became available in December, 2003 as the third impotence pill after sildenafil (Viagra) and vardenafil (Levitra). Due to its 36-hour effect it is also known as the **weekend pill**. It should be noted that the drug has not been formally studied in regard to multiple sexual attempts *during* a 36 hour period.

Tadalafil is also currently undergoing Phase III clinical trials for the treatment of pulmonary hypertension.

Mechanism of action



Taldenaplex 20 (Tadalafil) works by inhibiting PDE5, an enzyme found primarily in the arterial wall smooth muscle tissue of the penis and the lungs. A 20 mg dose of tadalafil is comparable to a 100 mg dose of sildenafil (Viagra). By inhibiting PDE5, tadalafil relaxes blood vessels in the penis, thereby increasing blood flow and aiding in erection.

Part of the physiological process of erection involves the parasympathetic nervous system causing the release of nitric oxide (NO) in the corpus cavernosum of the penis. NO binds to the receptors of the enzyme guanylate cyclase which results in increased levels of cyclic guanosine monophosphate (cGMP), leading to smooth muscle relaxation (vasodilation) in the corpus cavernosum, resulting in increased inflow of blood and an erection.

Taldenaplex 20 (Tadalafil) is a potent and selective inhibitor of cGMP specific phosphodiesterase type 5 (PDE5) which is responsible for degradation of cGMP in the corpus cavernosum. The molecular structure of tadalafil is similar to that of cGMP and acts as a competitive binding agent of PDE5 in the corpus cavernosum, resulting in more cGMP and better erections. Without sexual stimulation, and therefore lack of activation of the NO/cGMP system, tadalafil should not cause an erection. Other drugs that operate by the same mechanism include sildenafil (Viagra®) and vardenafil (Levitra®).

Taldenaplex 20 (Tadalafil) is currently undergoing clinical trials for the treatment of pulmonary hypertension. The clinical trials are based on tadalafil's inhibition of PDE5. It is hoped that by inhibiting this enzyme, tadalafil will prove effective in opening up blood vessels in the lungs, lowering pulmonary arterial resistance and pressure, and thus reducing the workload of the right ventricle of the heart.

Side effects

The most common side effects when using tadalafil are headache, indigestion, back pain, muscle aches, flushing, and stuffy or runny nose. These side effects usually go away after a few hours. Back pain and muscle aches can occur 12 to 24 hours after taking the drug, and the symptom usually disappears after 48 hours.

In May 2005, the U.S. Food and Drug Administration found that tadalafil (along with other PDE5 inhibitors) could lead to vision impairment in certain patient groups, including diabetics. An investigation is currently ongoing.

[Buy Now](#)



popular, growing sport of bodybuilding in the region is leading to bigger championships for local enthusiasts. Dana Ali, 31, who recently returned to Kurdistan from Britain, started lifting weights six year ago when he was abroad. "Oh, I became many pounds overweight," he said, taking a break after finishing the first set. "I see so many [overweight people] here, and I don't want to be like them. "I feel better and forget about all my problems when I come in and exercise," said Ali, having arrived straight from work wearing a black T-shirt and leather gloves. He works out five times a week and has shed most of his body fat; his chest and biceps are as thick as they were when he was living in Britain.

[Home](#) | [Specials](#) | [New Products](#) | [All Products ...](#) | [Reviews](#) | [Contact Us](#) | [FAQ](#) | [Map](#)

BUY TALDENAPLEX 20 Copyright © 2005-2007. [Privacy Notice](#)