



TAMOXIPLEX



[HOME](#) |
 [SPECIALS](#) |
 [NEW PRODUCTS](#) |
 [ALL PRODUCTS](#) |
 [REVIEWS](#) |
 [CONTACT US](#) |
 [FAQ](#)

TAMOXIPLEX

TAMOXIPLEX (Tamoxifen Citrate) Axiolabs BUY TAMOXIPLEX

Categories

- [Injectable Steroids](#)
- [Oral Steroids](#)
- [Ancilliaries](#)
- [Sexual Health](#)
- [Syringes & Needles](#)

News

2008-06-17

[Anabolic Steroid Dianabol Turns 50](#)

The performance-enhancing drug Dianabol, which became the first widely used anabolic steroid and has built muscle for athletes and bodybuilders and become the subject of criminal prosecutions, was developed in 1958. There's a good piece in the New York Daily News looking at half a century of the steroid's use:

2008-06-27

[Women On Prudent Dietary Pattern May Reduce Risk Of Death](#)

Women On Prudent Dietary Pattern May Reduce Risk Of Death Women who eat a diet rich in vegetables, fruits, legumes, whole grains, fish and poultry may reduce their risk of death from cardiovascular disease and all causes. Women who follow a traditional "Western" diet of red and processed meat, refined grains, fries and sweets may increase their risk. That's the

[Buy Now](#)



Substance: Tamoxifen Citrate
Manufactured by: Axiolabs
Packaging: 25 tabs, each tab 20mg

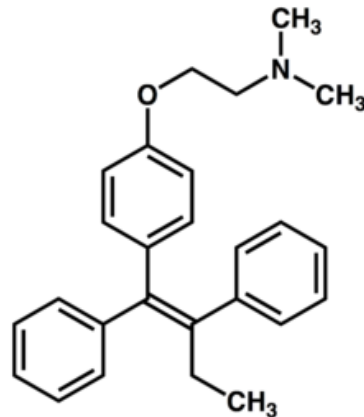
Tamoxifen is an orally active selective estrogen receptor modulator (SERM) which is used in the treatment of breast cancer and is currently the world's largest selling drug for this indication.

Tamoxifen was discovered by ICI Pharmaceuticals (now AstraZeneca) and is sold under the trade names **Nolvadex**, **Istubal**, and **Valodex**. However the drug, even before its patent expiration, was and still is widely referred to by its generic name tamoxifen.

TAMOXIPLEX is effective in the treatment of metastatic breast cancer in women and men. In premenopausal women with metastatic breast cancer, TAMOXIPLEX is an alternative to oophorectomy or ovarian irradiation. Available evidence indicates that patients whose tumors are estrogen receptor positive are more likely to benefit from TAMOXIPLEX therapy.

Adjuvant Treatment of Breast Cancer

TAMOXIPLEX is indicated for the treatment of node-positive breast cancer in women following total mastectomy or segmental mastectomy, axillary dissection, and breast irradiation. In some TAMOXIPLEX adjuvant studies, most of the benefit to date has been in the subgroup with four or more positive axillary nodes.



TAMOXIPLEX is indicated for the treatment of axillary node-negative breast cancer in women following total mastectomy or segmental mastectomy, axillary dissection, and breast irradiation.

The estrogen and progesterone receptor values may help to predict whether adjuvant TAMOXIPLEX therapy is likely to be beneficial.

TAMOXIPLEX reduces the occurrence of contralateral breast cancer in patients receiving adjuvant TAMOXIPLEX therapy for breast cancer.

Ductal Carcinoma in Situ (DCIS)

In women with DCIS, following breast surgery and radiation, TAMOXIPLEX is indicated to reduce the risk of invasive breast cancer (see BOXED WARNING at the beginning of the label). The decision regarding therapy with TAMOXIPLEX for the reduction in breast cancer incidence should be based upon an individual assessment of the benefits and risks of TAMOXIPLEX therapy.

Current data from clinical trials support five years of adjuvant TAMOXIPLEX therapy for patients with breast cancer.

Reduction in Breast Cancer Incidence in High Risk Women

TAMOXIPLEX is indicated to reduce the incidence of breast cancer in women at high risk for breast cancer. This effect was shown in a study of 5 years planned duration with a median follow-up of 4.2 years. Twenty-five percent of the participants received drug for 5 years. The longer-term effects are not known. In this study, there was no impact of tamoxifen on overall or breast cancer-related mortality

conclusion of researchers who reported the results of a Harvard School of Public Health study in *Circulation: Journal of the American Heart Association*. The study of 72,113 healthy women found that high adherence to the "prudent" dietary pattern was associated with a 28 percent lower risk of death from cardiovascular disease and a 17 percent lower risk of premature death from all causes when compared to the lowest adherence.

[Home](#) | [Specials](#) | [New Products](#) | [All Products ...](#) | [Reviews](#) | [Contact Us](#) | [FAQ](#) | [Map](#)

BUY TAMOXIPLEX Copyright © 2005-2007. [Privacy Notice](#)